

RIVERS EDGE

Starting at only \$25,000

Owner financing available with as little as 10% down

Gorgeous views... Privacy... Proximity to shopping, medical care, area attractions and amenities, and some of nature's finest showplaces... Protective covenants and underground utilities... All this and much more can be yours at River's Edge. Choose from lots ranging from 1 to 2.5 acres, resting on the most beautiful ridge line you have ever seen. Build your new home at River's Edge and enjoy your own personal slice of West Virginia's natural wonders.



A sampling of lots and views

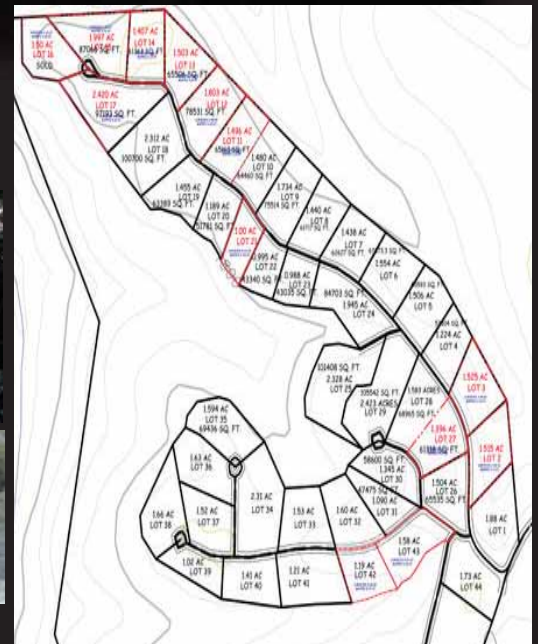


The Gauley River is known for its one of a kind Gauley River Season. September and October is when you can catch West Virginia's best white water rapids... practically at the development's back door!

Minutes from Rivers Edge, Summersville Lake offers fishing, boating, camping and hiking. Conveniently dock your boat at the lake, where it will always be ready for you when you desire.



Enjoy close access to Hawk's Nest State Park, Carnifex Ferry State Park, Babcock Mountain State Park and Sandstone Falls.



Listed By:

Candice Meade

304-673-2592

Candice.Meade@ERA.com



Mike Hazlewood, Broker